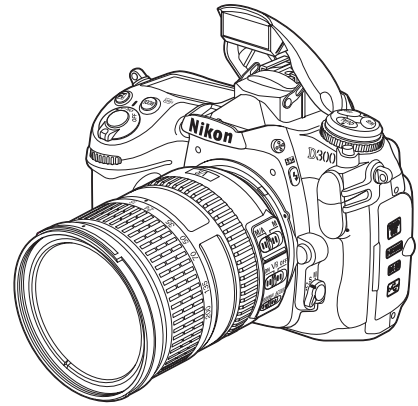


Downloading Optional Picture Controls for the D300

—Windows—



Thank you for choosing Nikon. This guide describes how to download and install the following optional Picture Controls for the D300: D2XMODE1, D2XMODE2, and D2XMODE3.

The steps involved in downloading and installing optional Picture Controls are outlined below:

1 Get ready pg. 2

Ready the equipment required to copy the Picture Controls to the camera.



2 Download and extract the D300 Picture Controls pg. 2

Download the optional Picture Controls from a Nikon website.



3 Copy the Picture Controls to a memory card pg. 3

Copy the optional Picture Controls to a memory card.



4 Copy the Picture Controls to the camera..... pg. 5

Copy the optional Picture Controls to the camera.

System Requirements

Before downloading optional Picture Controls, be sure your system meets the following requirements:

OS	Pre-installed versions of Windows Vista (32-bit Home Basic/Home Premium/Business/Enterprise/Ultimate editions), Windows XP Home Edition/Professional (SP2), Windows 2000 Professional (SP4).
Hard-disk space	5 MB free
RAM	32 MB
Miscellaneous	USB port

Save where otherwise noted, the screenshots in this guide are from Windows Vista.

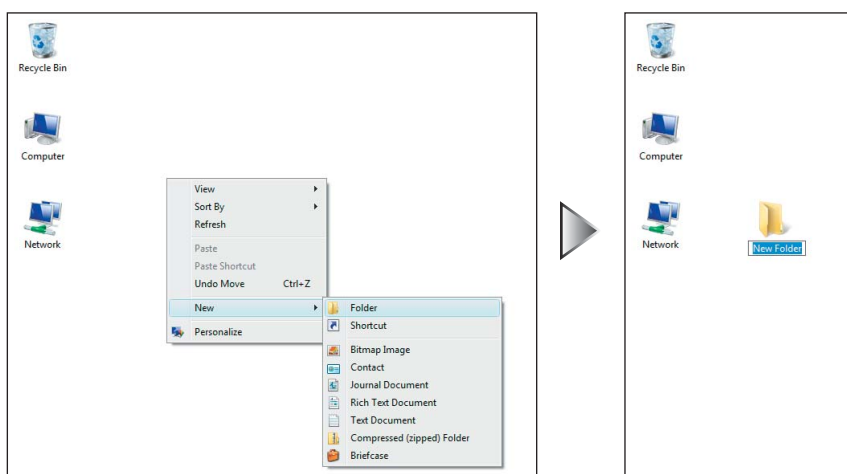
1 Get ready

To copy optional Picture Controls to the camera, you will need:

- The camera
- A UC-E4 USB cable
- One of the following power sources:
 - ◆ An EH-5a or EH-5 AC adapter
 - ◆ A fully-charged EN-EL3e rechargeable Li-ion battery
- A Nikon-approved memory card
- The camera manual

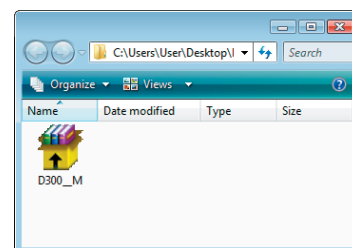
2 Download and extract the D300 Picture Controls

1 Right-click an empty area of the desktop and select **New > Folder** from the menu that appears. Name the folder as desired.

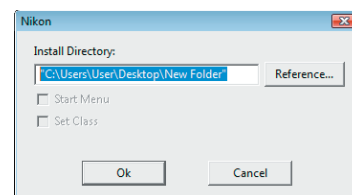


2 Click the "I agree - Begin download" link on the download site and download the D2X mode Picture Controls to the folder created in Step 2-1.

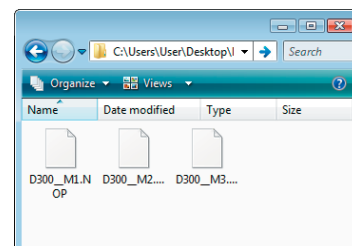
3 Open the folder created in Step 2-1 and double-click the downloaded file.



A dialog similar to that shown at right will be displayed; click **OK**. In Windows Vista, a "User Account Control" dialog will then be displayed; click **Allow**.



The optional Picture Controls "D300__M1.NOP", "D300__M2.NOP", and "D300__M3.NOP" will be extracted to a "NIKON" folder inside the folder created in Step 2-1.



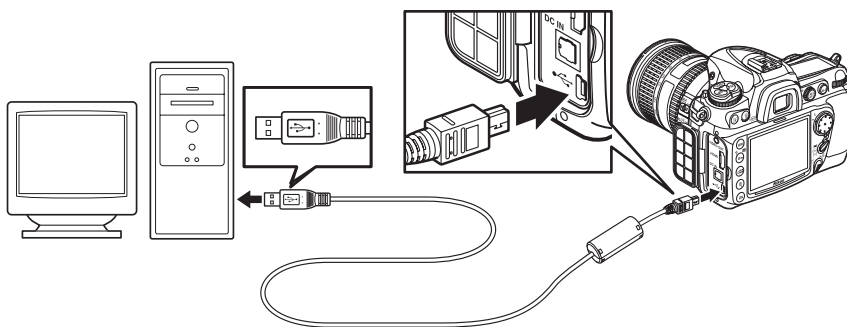
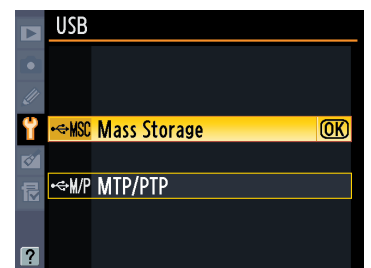
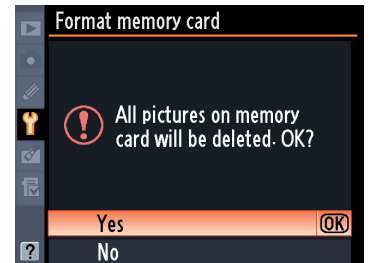
3

Copy the Picture Controls to a memory card

Optional Picture Controls can be copied to a memory card when the camera is connected to the computer using the USB cable.

Note: Use an EH-5a or EH-5 AC adapter or a fully-charged EN-EL3e rechargeable Li-ion battery.

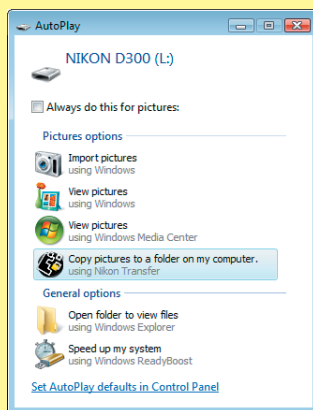
- 1 Turn the camera off and insert a memory card.
- 2 Turn the camera on and press the **MENU** button to display the camera menus. Navigate to the setup menu and select **Format memory card**. The dialog shown at right will be displayed; highlight **Yes** and press **OK** to format the memory card.
- 3 Press the **MENU** button and select **Mass Storage** for the **USB** option in the setup menu.
- 4 Turn the camera off and connect the USB cable as shown.



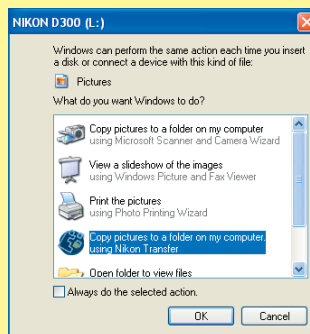
- 5 Turn the camera on. If Nikon Transfer is installed, it will start automatically; exit Nikon Transfer before proceeding.

AutoPlay (Windows Vista/XP)

Under Windows Vista and Windows XP, an AutoPlay dialog may be displayed. Click the close box (✖); Windows Vista) or click **Cancel** (Windows XP) to close the AutoPlay dialog.

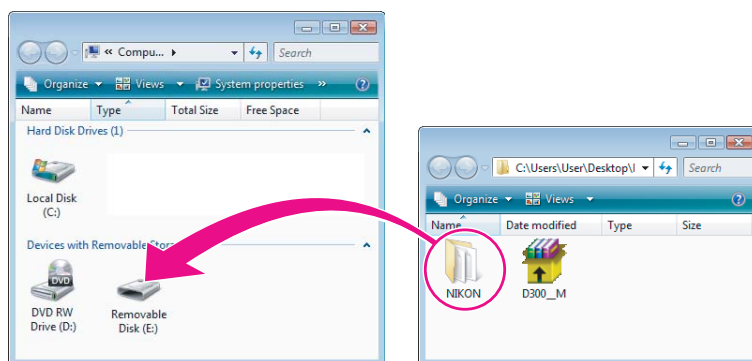


Windows Vista



Windows XP

- 6 The camera will appear in “Computer” (Windows Vista) or “My Computer” (Windows XP/2000) as a removable disk. Copy the “NIKON” folder created in Step 2 -3 to the removable disk.



Important

Copy the “NIKON” folder directly to the top (root) level of the removable disk. The camera will not recognize the optional Picture Controls if the “NIKON” folder is inside another folder.

When copying is complete, open the “NIKON” folder on the removable disk and confirm that it contains the optional Picture Controls “D300__M1.NOP,” “D300__M2.NOP,” and “D300__M3.NOP.”

Note: The number of exposures remaining will decrease when optional Picture Controls are copied to the memory card.

- 7 Disconnect the camera from the computer. For more information, see the camera manual.

4

Copy the Picture Controls to the camera

- 1 Turn the camera on.
- 2 Press the **MENU** button and select **Load/save** for the **Manage Picture Control** option in the shooting menu.
- 3 Select **Copy to camera**.
- 4 Highlight an optional Picture Control and press **OK**.
- 5 Highlight a destination for the optional Picture Control and press **OK**. Any Picture Control currently stored in the selected destination will be overwritten.

Settings for the optional Picture Control can be viewed using the **Save/edit** option in the **Manage Picture Control** menu. See the camera manual for details.

- 6 Repeat steps **4-2** to **4-5** to copy additional optional Picture Controls to the camera.

This completes the process of downloading and installing optional Picture Controls.

